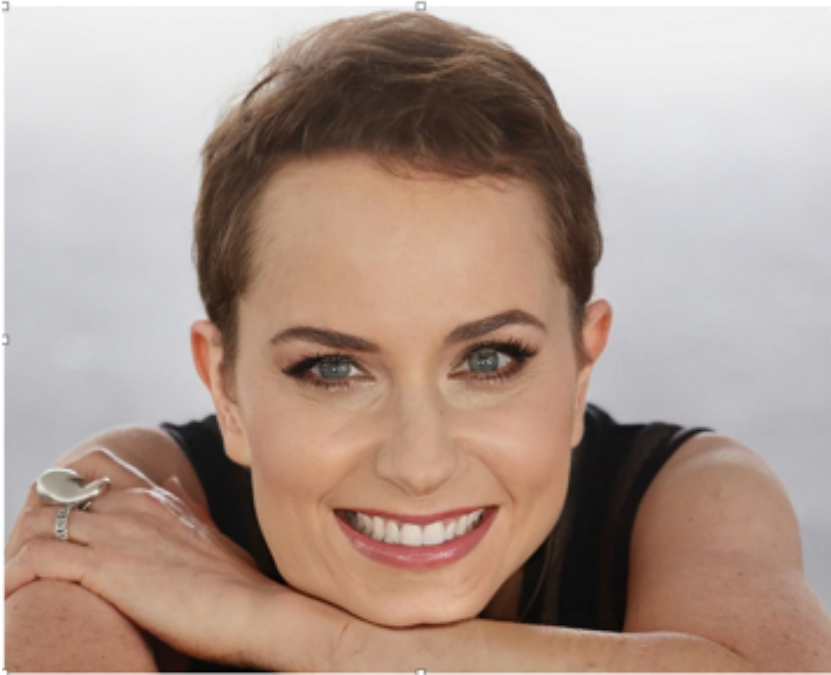


Shelly Goldstein



[Instagram](#)

[IMDB](#)

[Facebook](#)

[TikTok](#)

Script Doctor and Cabaret Performer Shelly Goldstein on The Humourology Podcast: Full Episode - 4/25/25 - In this episode of The Humourology Podcast, legendary screenplay, lyricist and joke writer Shelly Goldstein reflects on her life, the role of humour in our lives and how we can all use comedy both as a source of laughter and comfort.

Encapsulating hilarious anecdotes, wisdom and tales of woe, Shelly is one of the most compelling, thoughtful and laugh-out-loud people you will hear, combining practical advice with wit and pathos to deliver a truly memorable conversation.

From her upbringing in Chicago to her early career on stage, this Humourology Podcast interview incorporates stories from Shelly's childhood, her incredible career and her thoughts on why comedy is instinctive.

Having worked with such luminaries as Barbra Streisand, Steve Martin, Justin Timberlake, Hugh Jackman, Anne Hathaway, Jane Fonda, and many, many more, Shelly Goldstein is recognised as being one of the most

important voices in comedy, and if you're looking for something that both amuses and inspires, you've come to the right place!

As she describes her process:

"If I'm writing for someone who's wildly famous, and I have had the luck of doing that, I don't write jokes. I'm very good at capturing someone's voice and what their energy is, the way they speak, what their perspective is, how they approach a story, and then you sort of rear engineer, reverse engineer to make what you want them to say work in their voice."

99- Navigating AI And Creativity In Life With Shelley Goldstein - How can you keep communication authentic and engaging in an age of AI? Shelley Goldstein, Founder of Remarkable Speaking, tackles the growing challenges of maintaining emotional intelligence as technology changes how we interact. She shares strategies to stay curious, develop personal storytelling, and sharpen public speaking skills. Whether in personal or professional relationships, Shelly's practical exercises help listeners communicate with impact and authenticity. Tune in for actionable insights to elevate your speaking abilities in today's fast-evolving world.

The Woman Behind Hollywood's Funniest Stars – Says You Can Be Funny Too! - A multi-talented writer, performer, comic, singer, cabaret artist, and director whose work spans from London to LA. Whether she's crafting jokes for the biggest names in entertainment – think Stephen Colbert, Steve Martin, Liza Minnelli, Hugh Jackman, and Yoko Ono – or dazzling audiences with her musical comedy, Shelly's career is a masterclass in making humour work across every medium.

<https://pab58.com/2024/12/07/my-life-in-sketch-comedy/>

<https://variety.com/2025/tv/global/sherlock-and-daughter-season-2-1236431672/>



Sherlock stories

With Sir Arthur Conan Doyle's famous literary sleuth now in the public domain, the character is returning to television in a number of different productions. After bringing Holmes to the big screen, director Guy Ritchie is behind a Prime Video series called *Young Sherlock*, with Hero Fiennes Tiffin in the title role.

The CW in the US and Discovery+ in the UK and Ireland are among the broadcasters attached to another series,

Sherlock & Daughter (pictured), in which the renowned detective (played by David Thewlis) finds himself mysteriously unable to investigate a sinister case without risking the lives of his closest friends, while a young American (Blu Hunt) learns her missing father may be the esteemed detective, after her mother's shocking and unexplainable murder. Created by Brendan Foley, the show comes from Starlings Television Distribution, Albion Television, StoryFirst and distributor Federation Studios.

A third series brings a fun twist to the Sherlock legend. *Mademoiselle Holmes* centres on Charlie Holmes (Lola Dewaere) – a shy, reserved and socially awkward cop who struggles to fit in at the police station where she works. However, a car accident suddenly turns Charlie's world upside down, transforming her from an introvert to an extrovert with drive, energy and insight that make her a brilliant detective, just like her more famous relation. Distributed by Newen Connect, the six-part series is produced by Newen France for TF1.

Then there's *Watson*, a new CBS procedural that stars Morris Chestnut as Holmes's faithful partner Dr John Watson in a project described as a part-medical, part-detective drama set a year after Holmes's death. It is produced by CBS Studios and shopped by Paramount Global Content Distribution.



1978 MEE-OW SHOW

[Previous show](#)[Next show](#)

The Cast: Paul Barnosse, Jerry Franklin, Shelly Goldstein, Ken Marks, Jane Muller, Dana Olsen, Rush Pearson, Tina Rosenberg, Bill Wronski

Directed by: Kyle T. Helfner

Produced by: Melanie Barker

Music:

Pianist: Larry Schanker

Production Staff:

Associate Producer: Steve Jarvis

Assistant Director: Meryl Friedman

Script Assistants: Bill Aiken, Terry Aronoff, Ira Besserman

Technical Director: Catherine Martineau

Stage Manager: Dave Silberger

Set Design: Meryl Friedman, Kyle T. Helfner, Catherine Martineau

Lighting Design: Ron Mahla

Choreography: Bridget McDonough

